

View from below: a year in maritime archaeology at Heritage Victoria

Toni Massey^a and Rhonda Steel^b

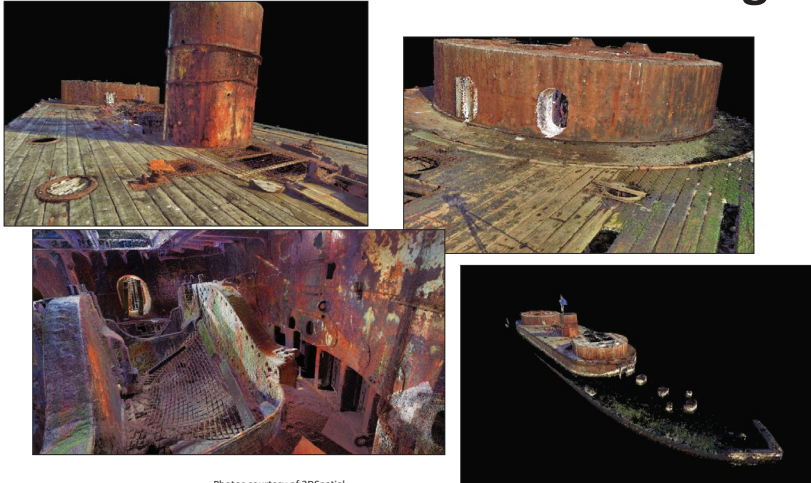
Abstract

For most people maritime archaeology equals shipwrecks, for those in the know it is all that and much more. This paper will provide a summary of what has been happening in the field of maritime archaeology in Victoria over the past year at Heritage Victoria. While the Clarence excavation for the ARC-funded 'Australian Historic Shipwreck Preservation Project' took up a large amount of time and resources there are a range of other exciting and interesting things going on in the background. Development works continue around Victoria and deep into Bass Strait, a new shipwreck was discovered off the Gippsland coast, and an exciting new dive site has been created using shipwreck artefacts.

A Year In Maritime Archaeology: 2012

- Projects include:
- *Eleutheria* – mapping
- Corrosion project
- Anchor farm
- Flinders University field school
- Teaching AIMA/NAS maritime archaeology course
- HMVS *Cerberus* 3D scanning
- Great Ocean Road
- Dive Training – ADAS
- New Shipwrecks
- ARC Linkage project – Clarence insitu preservation

HMVS *Cerberus* 3D Scanning



Photos courtesy of 3DSpatial

^a Heritage Victoria
toni.massey@dtpli.vic.gov.au

^b Heritage Victoria
rhonda.steel@dtpli.vic.gov.au